

JD 17.96 Bn
Market Cap.

-6.17%
Cap. % (YTD)

-6.91%
Index % (YTD)

Research & Studies Department
E-mail : Researchdept@Ahlibank.com.jo

Corporate Finance Department
E-mail : Corporatefinance@Ahlibank.com.jo

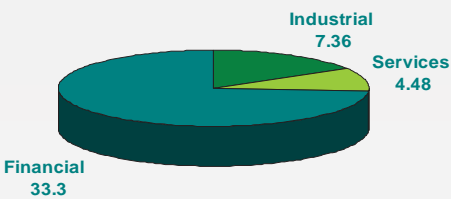
Index	Closing	Previous	Change (Points)	% Change
ASE Index	2022.63	2023.31	-0.68	-0.03%

Amman Stock Exchange (ASE) Market Information - Weekly Reading

Traded Value (JD)	Chg. (JD)	% Chg.	Traded Volume (Shares)	Chg. (Shares)	% Chg.
45,113,525	-180,238	-0.4%	47,955,545	-4,226,720	-8%

Amman Stock Exchange (ASE) Market Information - Weekly Reading

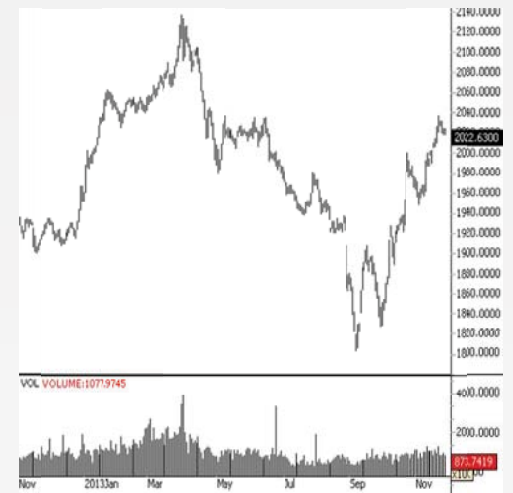
Weekly Traded Value by Sector /JD Mn



Sector Performance

Sector Index	% Chg.	Index Closing (Points)
Financial	▲ 0.73%	2,648.54
Services	▼ -1.13%	1,607.82
Industrial	▼ -0.52%	1,952.26

ASE-Index (YTD)



Most Traded Companies

Company Symbol	Close	Traded Value (JD)
ARBK	7.95	8,533,772
SPIC	0.8	4,885,436
JNTH	2.32	2,656,441

Most Active Companies

Company Symbol	Close	Traded Shares
SPIC	0.8	6,066,460
FUTR	0.44	3,491,927
SURA	0.4	2,705,935

Trade by Nationality Type

Nationality	Sell		Buy		Net Inver
	Securities	Market Value	Securities	Market Value	
Jordanian	7,845,135	8,002,613.32	8,214,218	8,315,076.43	312,463.11 ▲
Arab	846,944	1,044,017.70	445,201	582,400.34	-461,617.36 ▼
Foreign	45,340	325,068.50	78,000	474,222.75	149,154.25 ▲
Total	8,737,419	9,371,699.52	8,737,419	9,371,699.52	

ASE Market Breadth

64 Gainers
81 Decliners
30 Unchanged



Top ASE Decliners

Company	Symbol	Close	% Chg.
Al-manara Insurance	ARSI	0.09	-18%
Darat Jordan (holdings)	DARA	0.42	-18%
Al- Arabiya For Investment Projects	APCT	0.38	-17%
Elzay Ready Wear Manufacturing	ELZA	0.37	-10%

Top ASE Gainers

Company	Symbol	Close	% Chg.
Jordan Emirates Insurance	JEIC	1	32%
Al-bilad Securities & Investment	BLAD	0.93	24%
Travertine	TRAV	1	19%
Future Arab Investment	FUTR	0.44	19%

Market Sentiment : ASE General Index Slightly Declines During the Week

ASE's General index concluded the week's trading sessions at 2022.63 points thus recording a decline of 0.03% compared to last week's closing which came at 2023.31 points. Meanwhile, the daily average of trading value decreased by 1.5% during the week settling at JD9.02 million compared to JD9.16 million recorded last week. On the other hand, 64 shares managed to uplift their closing prices opposed to the decline of 81 shares out of 175 traded shares.

Corporate News:

General Mining (GENM): The Company announced holding its extra ordinary general assembly on 14/12/2013 so as to discuss establishing a limited liability company solely owned by GENM concerned with real estate trading and housing projects.

Jordan Emirates Insurance (JEIC): Amman Bourse announced floating the company's opening price as of 24/11/2013.

Sheba Metal Casting (SHBA): Amman Bourse announced listing the company's JD112,515 capital increase shares as of 28/11/2013.

Disclaimer:

The trading and financial related data contained in this report has been obtained from sources considered by Jordan Ahli Bank to be reliable in all material respects. However, the accuracy, fairness and completeness thereof are not guaranteed by Jordan Ahli Bank and its employees and its third-party suppliers shall have no liability for errors or omissions with respect to the services or its delivery, regardless of the cause or source of such error or omission. This is not an invitation to buy or sell stocks traded in Amman Stock Exchange. The purpose of this report is to provide information and analysis related to Amman Stock Exchange and assist investors to obtain information to support their decisions. The reader should not make any investment decision solely based on the information contained in this report and he/she should consult with his/her investment advisor before investing. This report is a copyright of Jordan Ahli Bank and should not be reproduced or distributed partially or fully in any shape or form without the written consent of Jordan Ahli Bank.

Other Reports:

- Market Reports (Weekly, Monthly, Yearly)
- Hit and Run Reports
- Company outlook Reports
- Sectorial Reports
- Economic Reports
- Company Equity Reports

Contact Us:

Lina N. Bakhit
Deputy C.E.O./Deputy G.M
Head of Ahli for Capital Markets & Investments Group
E-mail: Lina.bakhit@ahlibank.com.jo
Tel.: +962-6-4649529

Majed Hejab
Executive Manager
Head of Investment Banking
E-mail: Majed.Hejab@ahlibank.com.jo
Tel.: +962-6-5689861/2 + /5689857

Research & Studies

Rabe Al-Bataineh
Head of Research & Studies
E-mail: Researchdept@ahlibank.com.jo
Tel.: +962-6-5689854 / Ext: 17

Murad Hijazeen
Investment Analyst
E-mail: Murad.Hjazeen@ahlibank.com.jo
Tel.: +962-6-5689854 / Ext: 28

Jamil Al-Turk
Research Analyst
E-mail: Jamil.Al-turk@ahlibank.com.jo
Tel.: +962-6-5689854 / Ext: 18

Ahli Brokerage Company
E-mail: info@ahlibrokerage.com
Tel.: +962-6-5624362