

2013 [23 - 19]

0.21%	0.1%	19.16
(%)	(%)	

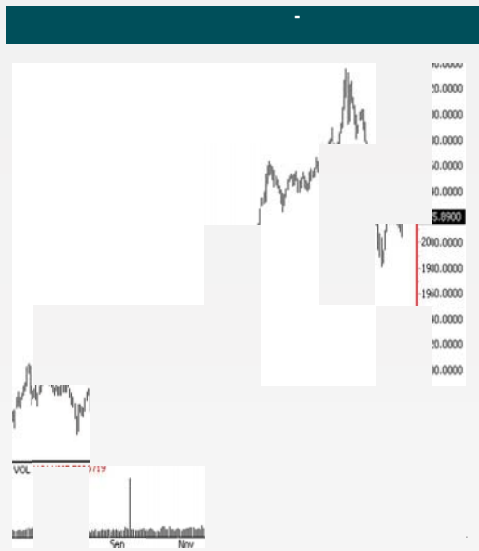
Research & Studies Department
E-mail : Researchdept@Ahlibank.com.jo

Corporate Finance Department
E-mail : Corporatefinance@Ahlibank.com.jo

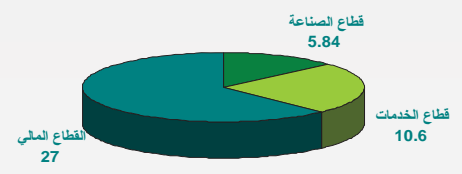
0.41%	8.19	2017.7	2025.89	☒
-------	------	--------	---------	---

-11.4%	-6,195,308	48,243,472	-18%	-9,560,054	43,494,305
--------	------------	------------	------	------------	------------

[]	[]	[]	[]	[]	[]
-----	-----	-----	-----	-----	-----



[]	(%)	
2,484.96	0.60%	☒
1,637.73	-0.20%	^
2,208.29	0.24%	☒



[]		
9,097,976	0.67	SPIC
5,729,561	0.56	IDMC
3,343,220	0.42	SURA

[]		
5,770,286	0.67	SPIC
3,445,796	0.56	IDMC
2,846,929	0.95	JDIB

^	-606,616.56	6,830,596.58	7,860,073	7,437,213.14	8,208,835
☒	182,237.11	1,394,507.19	1,155,945	1,212,270.08	845,461
☒	424,379.45	479,136.13	69,010	54,756.68	30,732
		8,704,239.90	9,085,028	8,704,239.90	9,085,028

[] -		
(%)		
-19%	0.42	SURA
-13%	0.56	IDMC
-10%	0.09	SECO
%-7	0.26	ELZA

[] -		
(%)		
19%	1.2	BIND
18%	0.66	AIUI
15%	0.15	JNCC
15%	0.85	AEIN

